

B&C MULTI-ACTIVE /MEN - JM 825

MIDDLE WEIGHT JACKET




Middle weight multi-use jacket with comfortable fleece lining


POLYESTER 210T TAFFETA

Outer layer: 100% polyester 210T taffeta


Body lining: 100% polyester anti-pilling micro-fleece

Sleeve lining: 100% polyester quilted taffeta


 S - M - L - XL - 2XL - 3XL

 5 pcs/pack & 30 pcs/carton



 Showerproof

ANTI PILLING Anti-pilling micro-fleece

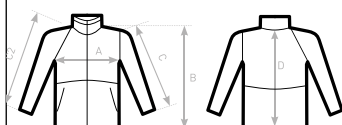
 Windproof

- Concealed hood
- Contrasted micro-fleece lining for extra warmth
- Standing collar, adjustable hem and cuffs for great protection
- PU Coating for better water protection and breathability
- Forward seam on shoulder for better comfort and waterproofness
- 2 zipped hand pockets with overlap
- 1 inner wallet pocket with closing tab
- Zip at lower back gives easy full decoration access (front - back - sleeves)
- Maximised decoration areas
- Fabric tested for the following decoration techniques: screen printing, heat transfer, sublimation (for white only) and embroidery



DUO
CONCEPT

with B&C Multi-Active /w.



SIZES [CM]

B&C MULTI-ACTIVE /MEN JM 825

A HALF CHEST
B BODY LENGTH FROM NECK POINT
C SLEEVE LENGTH
D CENTER BACK LENGTH

	XS	S	M	L	XL	2XL	3XL
A	-	55	58	61	64	67	70
B	-	72,5	74,5	76,5	78,5	80,5	82,5
C	-	62,5	64	65,5	67	68,5	70
D	-	71	73	75	77	79	81