

B&C TROOPER /MEN - JM 963

LIGHT WEIGHT JACKET / WITH LINING




Trendy light weight bomber jacket with ergonomic concealed hood


POLYESTER 210T TAFFETA

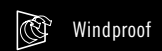
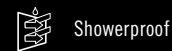
Outer layer: 100% polyester 210T taffeta

Body lining: 100% polyester mesh

Sleeve lining: 100% polyester taffeta

 S - M - L - XL - 2XL - 3XL

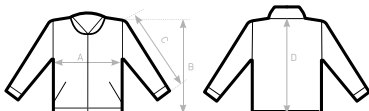
 5 pcs/pack & 30 pcs/carton



- Fashionable contrasted diamond mesh lining, improves breathability and comfort
- Self fabric inner collar
- Contemporary cotton feel heavy rib on cuffs and bottom hem
- Forward shoulder seams for better comfort and water protection
- 2 zipped hand pockets
- 1 inner wallet pocket with closing tabs
- Zip at lower back gives easy full decoration access (front - back - sleeves)
- Fabric tested for the following decoration techniques - screen printing, heat transfer, sublimation (for white only), and embroidery



DUO
CONCEPT
with B&C Trooper /w.



SIZES [CM]

| B&C TROOPER /MEN JM 963 | XS | S | M | L | XL | 2XL | 3XL |
|-------------------------------|----|------|------|------|------|------|------|
| A HALF CHEST | - | 56 | 59 | 62 | 65 | 68 | 71 |
| B BODY LENGTH FROM NECK POINT | - | 68 | 70 | 72 | 74 | 76 | 78 |
| C SLEEVE LENGTH | - | 66,5 | 68 | 69,5 | 71 | 72,5 | 74 |
| D CENTER BACK LENGTH | - | 66,5 | 68,5 | 70,5 | 72,5 | 74,5 | 76,5 |