

B&C X-LITE SOFTSHELL /WOMEN - JW 938

SOFTSHELL JACKET



Media player compatible: small opening for earphone cord in right chest pocket + hidden earphone loop on the collar



Chin protector



Full front reverse zip fastener with zip pull

Right chest zipped pocket with reverse zip fastening, garage & zip pull

Full inner placket in outer Softshell fabric + 2 inner pockets

Performance fit: ergonomic body shape articulated raglan sleeves



2 front zipped pockets

Adjustable cuffs with rubber tab



Adjustable bottom hem with elasticated drawcords and stoppers



High performance 3-layer Softshell jacket - Light Pack jacket

Outer layer: 94% polyester - 6% elastane
Woven Softshell (300 g/m² - total weight - all layers)

Mid layer: bonded breathable membrane, windproof, waterproof

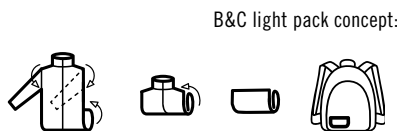
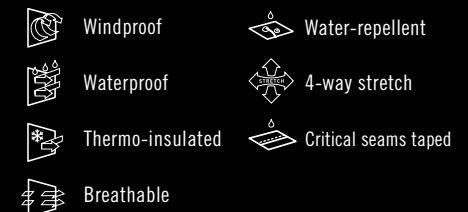
Inner layer: 100% polyester mesh

Waterproof: 5000 mm

Breathable: 5000 MVP

XS - S - M - L - XL - 2XL

1 pc/pack & 10 pcs/carton

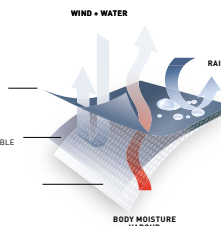


B&C light pack concept:

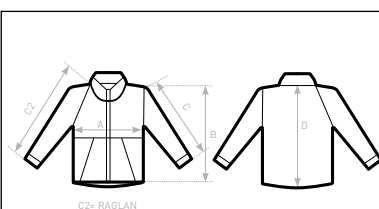
OUTER LAYER
WOMEN WATER REPELLENT FABRIC (94% PES - 6% ELASTANE)

MEMBRANE LAYER
BONDED WATERPROOF, WINDPROOF AND BREATHABLE MEMBRANE

INNER LAYER
100% PES MESH LINING



DUO
CONCEPT
with B&C X-Lite Softshell /men



SIZES [CM]

B&C X-LITE SOFTSHELL /W. JW 938

	XS	S	M	L	XL	2XL	3XL
A HALF CHEST	44,5	47,5	50,5	53,5	57,5	61,5	-
B BODY LENGTH FROM NECK POINT	63	64,5	66	67,5	69	70,5	-
C2 SLEEVE LENGTH	72,2	73,7	75,1	76,5	78,7	80,9	-
D CENTER BACK LENGTH	63	64,1	65,2	66,8	68,1	69,9	-