

GILDAN



18500

Heavy Blend Adult Hooded Sweatshirt

DETAILS

Weight
Content
Yarn Count
Features

271.0 G/SqM (White 257 G/SqM)
50% Cotton, 50% Polyester
20/1
Double-lined hood with colour-matched drawcord
Twin-needle stitching at shoulder, armhole, neck, waistband and cuffs
Pouch pocket
1 x 1 rib with elastane
Classic fit
Air jet yarn for softer feel and reduced pilling
Tear away label
Honduras, Mexico, Nicaragua
S-5XL
S - 3XL 24 PIECES
4XL - 5XL 12 PIECES
45
243

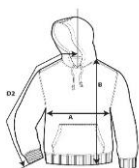
Country of Origin

Sizes

Case Packs

Colours

SKU's



SPECIFICATIONS

Centimeters

| | Tol- | Tol+ | S | M | L | XL | 2XL | 3XL | 4XL | 5XL |
|---|-------|-------|--------|--------|--------|--------|--------|--------|---------|---------|
| Chest (A) | 2.540 | 2.540 | 50.800 | 55.880 | 60.960 | 66.040 | 71.120 | 76.200 | 81.280 | 86.360 |
| Length from HPS (B) | 2.540 | 2.540 | 68.580 | 71.120 | 73.660 | 76.200 | 78.740 | 81.280 | 83.820 | 86.360 |
| Sleeve length (Centre back) (D2) | 2.540 | 2.540 | 85.090 | 87.630 | 90.170 | 92.710 | 95.250 | 97.790 | 100.330 | 102.870 |

Inches

| | Tol- | Tol+ | S | M | L | XL | 2XL | 3XL | 4XL | 5XL |
|---|-------|-------|--------|--------|--------|--------|--------|--------|--------|--------|
| Chest (A) | 1.000 | 1.000 | 20.000 | 22.000 | 24.000 | 26.000 | 28.000 | 30.000 | 32.000 | 34.000 |
| Length from HPS (B) | 1.000 | 1.000 | 27.000 | 28.000 | 29.000 | 30.000 | 31.000 | 32.000 | 33.000 | 34.000 |
| Sleeve length (Centre back) (D2) | 1.000 | 1.000 | 33.500 | 34.500 | 35.500 | 36.500 | 37.500 | 38.500 | 39.500 | 40.500 |

COLOURS

| Code | Sizes | Comments |
|------|-------|---------------------------|
| 246 | S-2XL | |
| 254 | S-2XL | |
| 393 | S-2XL | |
| 071 | S-2XL | |
| 109 | S-2XL | |
| 042 | S-2XL | |
| 194 | S-2XL | |
| 105 | S-2XL | |
| 108 | S-2XL | |
| 033 | S-2XL | |
| 219 | S-2XL | |
| 024 | S-2XL | |
| 516 | S-2XL | |
| 755 | S-2XL | 60% Polyester, 40% Cotton |
| 759 | S-2XL | 60% Polyester, 40% Cotton |
| 757 | S-2XL | 60% Polyester, 40% Cotton |
| 754 | S-2XL | 60% Polyester, 40% Cotton |
| 778 | S-2XL | 60% Polyester, 40% Cotton |
| 010 | S-2XL | |
| 080 | S-2XL | |
| 167 | S-2XL | |
| 39G | S-2XL | |
| 069 | S-2XL | |