

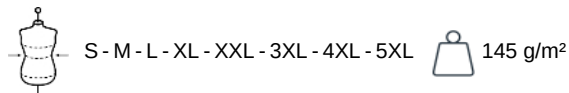
KARIBAN

K30251C

T-Shirt BIO1501C mit Rundhalsausschnitt

• Ein Kleidungsstück, das immer angesagt ist, für eine verantwortungsbewusstere Mode.

Uni : 100% Baumwolle. Farbton Ash Heather : 98% Baumwolle / 2% Viskose. Farbton Oxford Grey : 90% Baumwolle / 10% Viskose. Farbtöne Wine Heather ; French Navy Heather ; Green Marble Heather ; Cloudy Blue Heather : 80% Baumwolle / 20% Polyester. Und die Farbton Grey Heather : 70% Baumwolle / 30% Polyester.. Alle Farben werden aus biologischer Baumwolle in Umstellung hergestellt. Rundhalsausschnitt mit Strickbündchen und Elasthan. Farblich abgestimmtes Nackenband. Schlauchware. Doppelnähte an Ärmelbündchen und unterem Saum. Zertifizierte STANDARD 100 by OEKO-TEX®N° CQ1007/7, IFTH.



Zusätzliche Informationen

Logistik



Herkunftsland



BD - Bangladesch

Zolltarifnummer



61091000

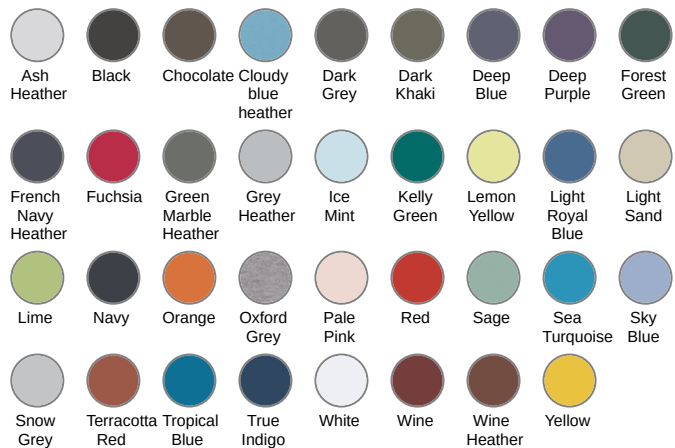
Waschanleitung



Auch erhältlich als



K30261C K30271C

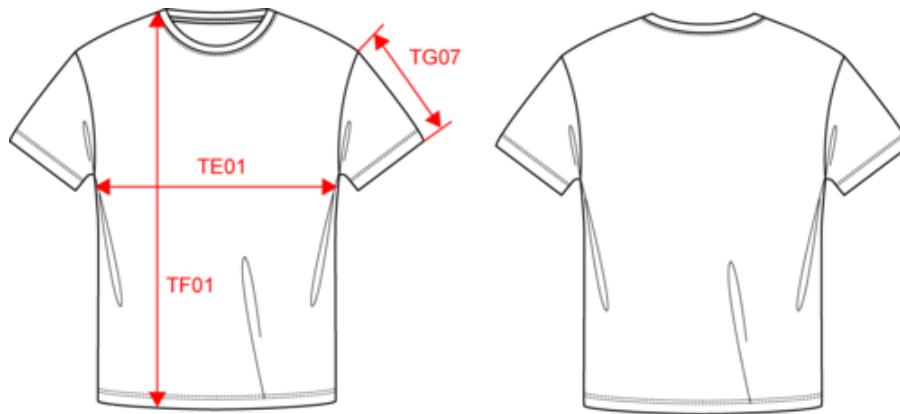


KARIBAN

K3025IC

T-Shirt BIO150IC mit Rundhalsausschnitt

Maße



Measurements in cm	S	M	L	XL	XXL	3XL	4XL	5XL
TE01 - 1/2 chest width at 1.5cm below armhole	50.00	53.00	56.00	59.00	62.00	65.00	68.00	71.00
TF01 - Total height from HSP	70.00	72.00	74.00	76.00	78.00	80.00	82.00	84.00
TG07 - Short sleeve length	16.50	17.00	17.50	18.00	18.50	19.00	19.50	20.00



KARIBAN

K3025IC

T-Shirt BIO150IC mit Rundhalsausschnitt

Farbinformationen

 Ash Heather RVB : Pantone C : Based on Warm gray 1C Pantone TCX : Based on 13-4108TCX	 Black RVB : 35,35,37 Pantone C : Based on Cool gray 7C / Black Pantone TCX : 16-3850TCX / 19-4004TCX	 Chocolate RVB : 63,52,49 Pantone C : 412C Pantone TCX : 19-0910TCX	 Cloudy blue heather RVB : Pantone C : Based on 7696C Pantone TCX : Based on 16-4519TCX	 Dark Grey RVB : 63,60,60 Pantone C : 447C Pantone TCX : 19-0000TCX
 Dark Khaki RVB : 75,71,61 Pantone C : 418C Pantone TCX : 19-0414TCX	 Deep Blue RVB : 65,72,95 Pantone C : 7545C Pantone TCX : 19-3926TCX	 Deep Purple RVB : 72,64,105 Pantone C : 5265C Pantone TCX : 19-3842TCX	 Forest Green RVB : 41,62,48 Pantone C : 5605C Pantone TCX : 19-5918TCX	 French Navy Heather RVB : Pantone C : Based on 432C Pantone TCX : Based on 19-4009TCX
 Fuchsia RVB : 188,21,94 Pantone C : 7425C Pantone TCX : 18-1945TCX	 Green Marble Heather RVB : Pantone C : Based on 418C Pantone TCX : Based on 19-0307TCX	 Grey Heather RVB : Pantone C : Based on 417C Pantone TCX : Based on 18-5203TCX	 Ice Mint RVB : 182,228,225 Pantone C : 573C Pantone TCX : 13-4909TCX	 Kelly Green RVB : 0,105,74 Pantone C : 7727C Pantone TCX : 18-5338TCX
 Lemon Yellow RVB : 226,223,129 Pantone C : 586C Pantone TCX : 12-0633TCX	 Light Royal Blue RVB : 53,95,151 Pantone C : 653C Pantone TCX : 18-4041TCX	 Light Sand RVB : 196,179,157 Pantone C : 480C Pantone TCX : 15-1304TCX	 Lime RVB : 151,202,91 Pantone C : 367C Pantone TCX : 14-0244TCX	 Navy RVB : 41,46,56 Pantone C : 433C Pantone TCX : 19-4012TCX
 Orange RVB : 252,107,16 Pantone C : 1585C Pantone TCX : 16-1364TCX	 Oxford Grey RVB : Pantone C : Based on Cool gray 7C / Black Pantone TCX : 16-3850TCX / 19-4004TCX	 Pale Pink RVB : 244,202,209 Pantone C : 692C Pantone TCX : 12-1310TCX	 Red RVB : 195,32,54 Pantone C : 200C Pantone TCX : 19-1664TCX	 Sage RVB : 153,172,163 Pantone C : 5635C Pantone TCX : 16-5304TCX
 Sea Turquoise RVB : 26,163,196 Pantone C : 631C Pantone TCX : 16-4529TCX	 Sky Blue RVB : 136,169,206 Pantone C : 5425C Pantone TCX : 14-4121TCX	 Snow Grey RVB : 170,174,175 Pantone C : 421C Pantone TCX : 15-4101TCX	 Terracotta Red RVB : 143,59,67 Pantone C : 181C Pantone TCX : 19-1543TCX	 Tropical Blue RVB : 0,111,159 Pantone C : 7468C Pantone TCX : 18-4537TCX
 True Indigo RVB : 33,54,86 Pantone C : 534C Pantone TCX : 19-4027TCX	 White RVB : 236,236,252 Pantone C : White Pantone TCX : 11-0601TCX	 Wine RVB : 91,39,54 Pantone C : 504C Pantone TCX : 19-1522TCX	 Wine Heather RVB : Pantone C : Based on 497C Pantone TCX : Based on 19-1725TCX	 Yellow RVB : 254,186,36 Pantone C : 1235C Pantone TCX : 15-0955TCX

Logistik  10  100

Sizes	Width (cm)	Height (cm)	Length (cm)	Net weight (kg)	Gross weight (kg)	Pieces/Box	Pieces/Bundle
S	40.00	30.00	60.00	12.50000	13.90000	100	10
M	40.00	30.00	60.00	13.20000	14.50000	100	10
L	40.00	32.00	60.00	14.50000	15.90000	100	10
XL	40.00	32.00	60.00	14.90000	16.30000	100	10
XXL	40.00	33.00	60.00	16.10000	17.60000	100	10
3XL	40.00	20.00	60.00	8.20000	9.60000	50	10
4XL	40.00	22.00	60.00	9.20000	10.60000	50	10
5XL	40.00	24.00	60.00	9.50000	10.90000	50	10