

PROACT.®

REFERENCE : PA005

SIZES : XS S M L XL XXL

COMPOSITION :

Main fabric : Polyester / Elastane 88/12 Quick dry - 200 88% polyester / 12%elastane

WEIGHT :

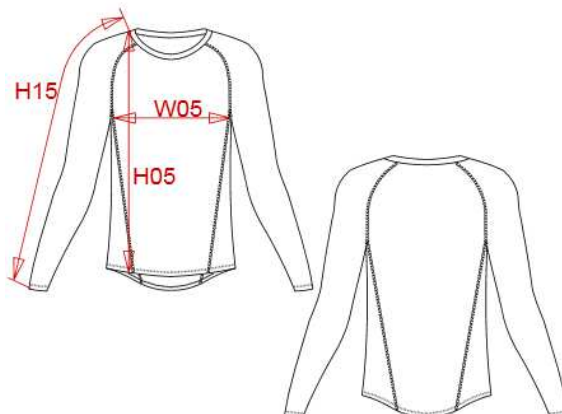
Main fabric : 200 gsm

FABRIC CONSTRUCTION AND FINISHING :

Quick dry fabric

ARTICLE WEIGHT :

192 gr/pc



DESCRIPTION										COLORS		PANTONE SERIGRAPHIE	
Français : T-SHIRT DOUBLE PEAU SPORT MANCHES LONGUES UNISEXE										Black		Black	
English : Long sleeve skin tight "Quick Dry" T-shirt										White		White	
Nederlands : Thermoshirt lange mouwen										Sporty red		186C	
Deutsch : LANGARM DOPPELHAUT T-SHIRT SCHNELLTROCKNEND										Sporty royal blue		300C	
Español : Camiseta de manga larga doble piel "Quick Dry"										Orange		1585C	
Italiano : T-SHIRT MANICHE LUNGHE QUICK DRY										Sky blue		283C	
Português : T-shirt justa manga comprida "Quick Dry"										Green		7740C	
MEASUREMENT										Sporty navy		295C	
Description	Tol +/-	Tol +/- Taille max	XS	S	M	L	XL	XXL		Sporty yellow		123C	
H05 Hauteur totale devant / Front total height			62,10	64,20	66,30	68,40	70,50	73,60					
W05 1/2 largeur poitrine/1/2 chest width	3,5%	3,0%	37	40	43	46	49	53					
H15 Longueur dessus de manche / Outtter sleeve length + shoulder			65,50	68,30	71,20	74	77	80,30					
CARE LABEL													
PACKING													
Box	25 pcs / box All sizes => L:37cm W:28cm H:26cm GW:5.80kg NW:5.00kg												