

PROACT.®

REFERENCE : PA480

SIZES : XS S M L XL XXL 3XL

COMPOSITION :

Main fabric : Interlock 155 For front, back & sleeve 100% polyester

Main fabric : Interlock 155 For shoulder seam piping, inner side slit & neckline cleanness. 100%polyester

WEIGHT :

Main fabric : 155gsm

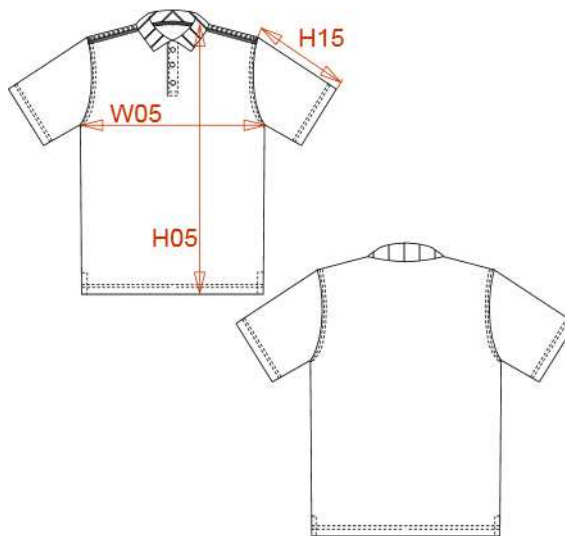
Main fabric : 155gsm

FABRIC CONSTRUCTION AND FINISHING :

Quick dry fabric

ARTICLE WEIGHT :

170 gr/pc



DESCRIPTION	
Français :	Polo manches courtes
English :	Men's short sleeve polo shirt
Nederlands :	Heren sportpolo korte mouwen
Deutsch :	KURZARM HERREN POLO QUICK DRY
Español :	Polo de manga corta para hombre
Italiano :	POLO UOMO MANICHE CORTE
Português :	Polo manga curta

COLORS	PANTONE SERIGRAPHIE
Black	Black
White	White
Navy	296C
Sporty red	186C
Sporty royal blue	300C

MEASUREMENT									
Description	Tol +/-	Tol +/- Taille max	XS	S	M	L	XL	XXL	3XL
H05 Hauteur totale / Total height			68,80	70,80	72,80	74,80	76,80	78,80	81,50
W05 1/2 largeur poitrine / 1/2 chest width	3,0%	2,5%	44	47	50	53	56	59	63
H15 Longueur manche / Sleeve length			20	21	22	23	24	25	26,50

CARE LABEL				

PACKING	
Box	25 pcs / box XS-S => L:46cm W:38cm H:16cm GW:4.50kg NW:3.90kg M-XL => L:53cm W:40cm H:16cm GW:5.20kg NW:4.50kg XXL-3XL => L:62cm W:44cm H:16cm GW:6.40kg NW:5.50kg