



Unisex-Langarmshirt

Normale Passform

XXS 3XL

180 GSM

Einzelheiten

- Set-In-Ärmel
- 1x1 Rippstrick am Halskragen
- Doppelnaht-Stepptisch an Ärmelbündchen und Saum
- Innenliegendes Nackenband aus Eigenstoff

Zusammensetzung

Shell - Singlejersey
 100% gekämmte ringgesponnene Bio-Baumwolle - 180 GSM
 Vorgewaschen

Pflege

Wash similar colours together, no ironing on print,
 wash and iron inside out.



Herkunftsland

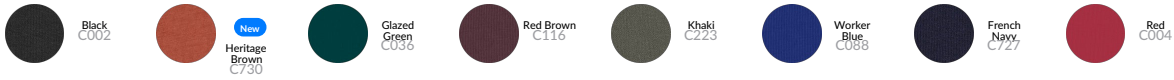
Weaving : Bangladesh
 Dyeing : Bangladesh
 Assembly : Bangladesh



Whites



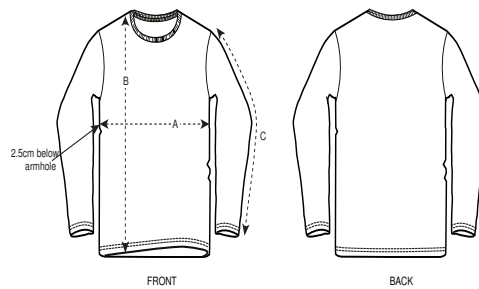
Colors



Essential Heathers



Größenführer



Sizes		XXS	XS	S	M	L	XL	XXL	3XL
A	Half Chest	45.5	47.5	49.5	53.5	56.5	59.5	63.5	67.5
B	Body Length	62	65	69	73	75	77	79	81
C	Sleeve Length	60.5	61.5	63	64.5	65	65.5	66	66.5

Verpackung

Sizes		XXS	XS	S	M	L	XL	XXL	3XL
	Pieces/bag	5	5	5	5	5	5	5	5
	Pieces/box	25	50	50	50	50	50	50	25